

3D Printing Solutions For **Orthodontics**



FORM 3BL

Maximum Productivity, Minimum Intervention

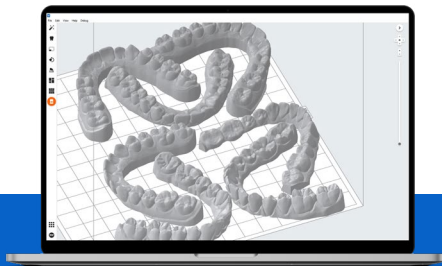
Produce models day and night with the Form 3BL, an industrial large-format 3D printer developed for laboratories and other manufacturers of dental products.



FORM 3B+

Work Smarter, Not Harder

Rapidly fabricate accurate, high-quality dental models, appliances, and prosthetics with the Form 3B+, an advanced desktop 3D printer developed for dental professionals.



PREFORM AND DASHBOARD

Free, Powerful Software That's
Easy to Learn



FORM WASH AND FORM CURE

Automated Post-Processing Saves
Time and Effort

Clear Aligner and Retainer Models

Make your own appliances for only \$2-3 USD per model



PRINTED FLAT ON FORM 3B+

Up to 8 models per print in 1 hr



PRINTED FLAT ON FORM 3BL

Up to 24 models per print in 2.5 hrs



PRINTED VERTICALLY ON FORM 3B+

Up to 18 models per print in 5.5 hrs



PRINTED VERTICALLY ON FORM 3BL

Up to 52 models per print in 10 hrs

Direct-Printed Biocompatible Appliances



Occlusal Splints

\$4-5 USD per splint
Up to 6 splints per print in 4 hrs



Indirect Bonding Trays

~ \$6 USD per tray
Up to 6 trays per print in 2 hrs

Print times and throughput figures are given for Form 3B+ and may change with future updates.

Please note that workflows using biocompatible resins may not be available in all regions. Ask a sales representative about availability in your region.